

OPERATION MANUAL



CYCLONE DUST COLLECTOR

Model. SB-C870

Order Code S310

Edition No : SB-C870-1

Date of Issue : 10/2022

MACHINE DETAILS

MACHINE	<input type="text" value="CYCLONE DUST COLLECTOR"/>
MODEL NO.	<input type="text" value="SB-C870"/>
SERIAL NO.	<input type="text"/>
DATE OF MANF.	<input type="text"/>

DISTRIBUTED BY



www.machineryhouse.com.au

www.machineryhouse.co.nz

NOTE:

This manual is only for your reference. At the time of the compiling of this manual every effort to be exact with the instructions, specifications, drawings, and photographs of the machine was taken. Owing to the continuous improvement of the HAFCO METALMASTER machine, changes may be made at any time without obligation or notice. Please ensure the local voltage is the same as listed on the specification plate before operating any electric machine.

SAFETY SYMBOLS

The purpose of safety symbols is to attract your attention to possible hazardous conditions

 **WARNING** *Indicates a potentially hazardous situation causing injury or death*


 **CAUTION** *Indicates an alert against unsafe practices.*

Note: Used to alert the user to useful information

NOTE:

In order to see the type and model of the machine, please see the specification plate. Usually found on the back of the machine. See example (Fig.1)

Fig.1

	
PRODUCT SPECIFICATIONS	
Model: SBC-870	
Flow Rate: 870m ³ /h	Voltage: 240V/50Hz
Nett Weight: 47-50kg	Motor: 0.55kW
MFG Date:	FLC: 2.3A
Serial No:	<input type="text"/>
Imported by www.machineryhouse.com.au	Made in China www.machineryhouse.co.nz

C O N T E N T S:

1. GENERAL MACHINE INFORMATION	
1.1 Specifications.....	4
1.2 Electrical Requirements.....	4
1.3 Identification.....	5
2. SAFETY.	
2.1 General Metalworking Machine Safety.....	6
2.2 Specific Safety For Drill/Mill.....	9
3. SETUP	
3.1 Unpacking.....	10
3.2 Clean Up.....	10
3.3 Site Preparation.....	10
3.4 Lifting Instructions.....	10
3.5 Assembly.....	11
3.6 Blast Cabinet Dust Port Modification.....	12
4. MAINTENANCE & SERVICING	
4.1 Schedule.....	13
4.2 Troubleshooting.....	14
Spare Parts.....	15
Risk Assessment Sheets.....	18

NOTICE

**READ AND UNDERSTAND THIS
MANUAL BEFORE OPERATING
THIS EQUIPMENT**



1.1 SPECIFICATION

Order Code	S310
MODEL	SB-C870
Fan Capacity (Cubic metres/hr)	870
Dust Collecting Capacity (kg / hr)	2.9
Type	Two Stage
Waste Tank Capacity (Ltr)	22
Min Load Capacity (Ltr)	12
Motor (hp / kW)	3/4 / 0.55
Voltage (V)	240
Amps (A)	10
Noise Level (dba @ 1mtr)	75
Shipping Size (L x W x H) (cm)	117 x 59 x 48
Net Weight (kg)	49.5
Gross Weight (kg)	52

1.2 ELECTRICAL REQUIREMENTS

Place the machine near an existing power source. Make sure all power cords are protected from traffic, material handling, moisture, chemicals, or other hazards. Make sure there is access to a means of disconnecting the power source. The electrical circuit must meet the requirements for 240V.

NOTE : The use of an extension cord is not recommended as it may decrease the life of electrical components on your machine.

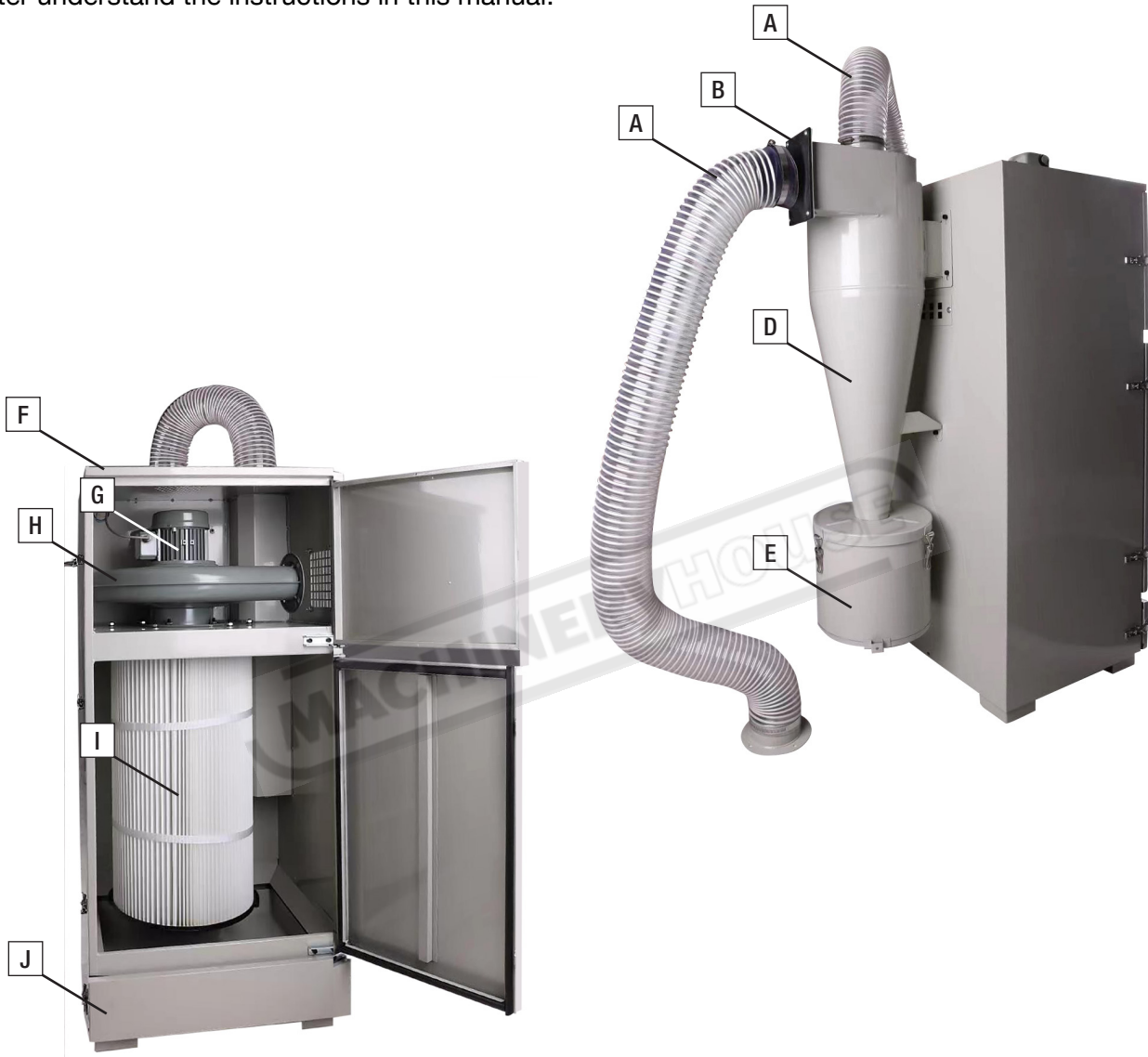
ELECTRICAL REQUIREMENTS

Nominal Voltage.....	240V
Cycle.....	50 Hz
Phase.....	Single Phase
Power Supply Circuit.....	10 Amps
Full Load Current.....	2.3 Amps

(Full load current rating is also on the specification plate on the motor.)

1.3 IDENTIFICATION

Become familiar with the names and locations of the controls and features shown below to better understand the instructions in this manual.



A	Long Inlet Hose	F	Cabinet
B	Hose Flange	G	Motor
C	Short Hose	H	Impeller
D	Cyclone	I	Filter
E	Dust Reclaimer	J	Dust Drawer

2.1 GENERAL SAFETY REQUIREMENTS

DO NOT use this machine unless you have read this manual or have been instructed in the use of this machine in its safe use and operation



WARNING

This manual provides safety instructions on the proper setup, operation, maintenance, and service of this machine. Save this manual, refer to it often, and use it to instruct other operators. Failure to read, understand and follow the instructions in this manual may result in fire or serious personal injury—including amputation, electrocution, or death.

The owner of this machine is solely responsible for its safe use. This responsibility includes, but is not limited to proper installation in a safe environment, personnel training and authorization to use, proper inspection and maintenance, manual availability and comprehension, of the application of the safety devices, integrity, and the use of personal protective equipment.

The manufacturer will not be held liable for injury or property damage from negligence, improper training, machine modifications or misuse.



Safety glasses must be worn at all times in work areas. Earmuffs should be worn if the work area is noisy.



Sturdy footwear must be worn at all times in work areas.



Gloves should NOT be worn when operating machinery. Should only be worn when handling the material



Long and loose hair must be contained with a net or under a hat

OWNER'S MANUAL. Read and understand this owner's manual before using the machine.

DISCONNECT POWER FIRST. If using power, always disconnect the machine from power supply before making adjustments, or servicing the machine. This prevents any risk of injury from unintended startup or contact with live electrical equipment

TRAINED OPERATORS ONLY. Operators that have not been trained have a higher risk of being seriously injured. Only allow trained or supervised people to use this machine. When the machine is not being used, disconnect the power, to the machine to prevent unauthorized use—especially around children. Make the workshop safe.

2.1 GENERAL SAFETY REQUIREMENTS Cont.

WEARING PROPER APPAREL Do not wear clothing, apparel or jewelry that can become entangled in moving parts. Always tie back or cover long hair. Wear non-slip footwear to avoid accidental slips, which could cause loss of operating control.

HEARING PROTECTION. Always wear hearing protection when operating or observing loud machinery. Extended exposure to this noise without hearing protection can cause permanent hearing loss.

REMOVE ADJUSTING TOOLS. Tools left on machinery can become dangerous projectiles upon startup. Never leave hex keys, wrenches, or any other tools on machine. Always verify removal before starting!

USE CORRECT TOOL FOR THE JOB. Only use this tool for its intended purpose. Do not force the machine or its attachments to do a job for which they were not designed. Never make unapproved modifications. Modifying the machine or using it differently than intended may result in malfunction or mechanical failure that can lead to personal injury or death!

AWKWARD POSITIONS. Keep proper footing and balance at all times when operating machine. Do not overreach! Avoid awkward hand positions that make operating control difficult. This could increase the risk of accidental injury

GUARDS & COVERS. Guards and covers reduce accidental contact with moving parts or flying debris. Make sure they are properly installed, undamaged, and working correctly.

DUST PROTECTION. Only use safety equipment that has been approved by an appropriate standards agency. Breathing protection must be approved for specific hazards in the work area.

FORCING MACHINERY. Do not force the machine. It will do the job safer and better at the rate for which it was designed.

NEVER STAND ON MACHINE. Serious injury may occur if the machine is tipped or if the cutting tool is unintentionally contacted

STABLE MACHINE. Unexpected movement during operation greatly increases risk of injury or loss of control. Before starting, verify machine is stable and if using a mobile base it is locked in position.

UNATTENDED OPERATION. To reduce the risk of accidental injury, turn the machine OFF and ensure all moving parts have completely stopped before walking away. Never leave the machine running while unattended.

MAINTAIN WITH CARE. Follow all maintenance instructions and lubrication schedules to keep the machine in good working condition. A machine that is improperly maintained could malfunction, leading to serious personal injury or death.

CHECK DAMAGED PARTS. Regularly inspect the machine for any condition that may affect the safe operation. Immediately repair or replace damaged or parts that are incorrectly fitted before operating.

CHILDREN & BYSTANDERS. Keep children and bystanders at a safe distance from the work area. Stop using machine if they become a distraction.

USE PROPER EXTENSION CORD. Make sure any extension cord being used is in good condition and the right amperage for the machine. Your extension cord must also contain a ground wire and plug pin. Always repair or replace extension cords if they become damaged.

2.1 GENERAL SAFETY REQUIREMENTS Cont.

HAZARDS ASSOCIATED WITH MACHINES include, but are not limited to:

- Being struck by ejected parts of the machinery
- Being struck by material ejected from the machinery
- Contact or entanglement with the machinery
- Contact or entanglement with any material in motion

Health Hazards (other than physical injury caused by moving parts)

- Chemicals hazards that can irritate, burn, or pass through the skin
- Airborne items that can be inhaled, such as oil mist, metal fumes, solvents, and dust
- Heat, noise, and vibration
- Ionizing or non-ionizing radiation (X-ray, lasers, etc.)
- Biological contamination and waste
- Soft tissue injuries (for example, to the hands, arms, shoulders, back, or neck) resulting from repetitive motion, awkward posture, extended lifting, and pressure grip)

Other Hazards

- Slips and falls from and around machinery during maintenance
- Unstable equipment that is not secured against falling over
- Safe access to/from machines (access, egress)
- Fire or explosion
- Pressure injection injuries from the release of fluids and gases under high pressure
- Electrical Hazards, such as electrocution from faulty or ungrounded electrical components
- Environment in which the machine is used (in a machine shop, or in a work site)



WARNING. *Machines are safeguarded to protect the operator from injury or death with the placement of guards. Machines must not be operated with the guards removed or damaged.*



WARNING! *People with pacemakers should consult their physician(s) before use. Electromagnetic fields in close proximity to heart pacemaker could cause pacemaker interference or pacemaker failure.*

2.2 SPECIFIC SAFETY FOR CYCLONE DUST COLLECTORS

DO NOT use this machine unless you have been instructed in its safe use and operation and have read and understood this manual



A mask must be worn when excessive airborne dust is created



Safety glasses must be worn at all times in work areas



Sturdy footwear must be worn at all times in work areas



Respirator must be worn when changing or cleaning the filter

MACHINE USE

If you are at any time experiencing difficulties performing any operation, stop using the machine! Then contact your local Service Centre, or ask an experience operator how the operation should be performed.

This dust collector must not use for abrasives containing crystalline silica. Silica containing abrasives have been linked to severe respiratory disease such as silicosis. Only Use proper abrasives such as aluminum oxide, glass bead, or walnut shell.

Only use safety equipment that has been approved by an appropriate standards agency. Unapproved safety equipment may not provide adequate protection. Eye protection must be ANSI-approved and breathing protection must be approved for the specific hazards in the work area.

DO NOT use with any openings blocked. Keep openings clear of anything that may limit air flow or hinder motor operation.

DO NOT use the Reclaimer without its Filter in place. Before each use, make sure the Filter is not clogged

DO NOT operate the dust collector in areas where explosion risks would be high if dust were dispersed into the area. Areas of high risk include, but are not limited to, areas near pilot lights and/or open flames.

DO NOT use the Dust Reclaimer to pick up water (or any other liquid) from the floor or containers such as sinks, tubs, barrels, etc.

SERVICING & MAINTENANCE

Disconnect from the power supply and allow impeller to come to a complete stop before servicing or working on the dust collector ducting system. When emptying dust from the collection bags, wear a respirator and safety glasses. Empty dust into an approved container and dispose of correctly.

3 SETUP

3.1 UNPACKING

This machine was carefully packaged for safe transport. When unpacking, separate all enclosed items from packaging materials and inspect them for shipping damage. If items are damaged, please contact your distributor.

NOTE: Save all the packaging materials until you are completely satisfied with the machine and have resolved any issues with the distributor, or the shipping agent.

When unpacking, check the packing list to make sure that all parts shown are included. If any parts are missing or broken, please contact the your distributor.

3.2 CLEAN - UP

The unpainted surfaces of the machine have been coated with a waxy oil to protect them from corrosion during shipment. Remove the protective coating with a solvent cleaner or a citrus based degreaser.

Optimum performance from your machine will be achieved when you clean all moving parts or sliding contact surfaces that are coated with rust prevented products.

It is advised to avoid chlorine based solvents, such as acetone or brake parts cleaner, as they will damage painted surfaces and strip metal should they come in contact. Always follow the manufacturer's instructions when using any type of cleaning product.

3.3 SITE PREPARATION

When selecting the site for the machine, consider the largest size of workpiece that will be processed through the machine and provide enough space around the machine for operating the machine safely. Consideration should be given to the installation of auxiliary equipment. Leave enough space around the machine to open or remove doors/covers as required for the maintenance and service as described in this manual.

It is recommended that the machine is anchored to the floor to prevent tipping or shifting. It also reduces vibration that may occur during operation.

3.4 LIFTING INSTRUCTIONS

**WARNING**

This machine is extremely heavy. Serious personal injury may occur if safe moving methods are not followed. To be safe, you will need assistance and power equipment when moving the shipping crate and removing the machine from the crate.



On the day that the machine arrives, make sure that a forklift or lifting device, with sufficient capacity is available to unload the machine from the vehicle. Ensure access to the chosen site is clear and that doors and ceilings are sufficiently high and wide enough to receive the machine.

3.5 ASSEMBLY

The machine must be fully assembled before it can be operated. First clean any parts that are coated in rust preventative to ensure the assembly process can proceed smoothly.

To Assemble The SB-C870 Dust Collector

1. Place the cabinet in an upright position, and attach the cyclone funnel using the 6 off M6 x 10mm Screws. (Fig. 2)



2. Connect the hose inlet flange to the cyclone funnel using the #5 gasket and four M6 x 16mm bolts and nuts. (Fig. 3)



3. Using the short flexible hose, connect the cyclone funnel to the cabinet with the large clamps. (Fig. 4)



4. Fix one ending of long flexible hose to the cyclone air inlet flange, and connect the other end of the hose to the sandblast cabinet exhaust vent. (Fig. 5)



5. Adjust all toggle locks to ensure that the doors are sealed and do not leak.

3.6 BLAST CABINET DUST PORT MODIFICATION

This modification is not essential and is only required if full utilization of the HAFCO METALMASTER SB-C870 is required. The modification consists of enlarging the exhaust dust port on the sand blast cabinet to the same size as the 100mm hose on the SB-C870. To help with this process a pre-drilled round flat plate and a 100mm flange plate have been supplied.

1. Remove existing dust collector unit and clean the interior of the dust cabinet
2. Remove the interior deflection plate. (Fig. 6)

NOTE: *The existing inlet hole, can be used as it is, but if a higher volume of air flow is required this hole will need to be enlarged to 100mm. There are multiple methods to enlarge the hole such as plasma cutters, grinders, nibbler or hole saws.*

Enlarging With A Hole Saw,

3. Using the existing holes (Fig.7), bolt on to the blast cabinet the sacrificial plate supplied to aid in this process when using a 100mm hole saw. (Fig. 8)
4. With the holesaw, drill through this sacrificial plate & through the cabinet wall to enlarge the hole ensuring to remove any sharp edges before mounting the 100mm hose flange. (Fig. 9)

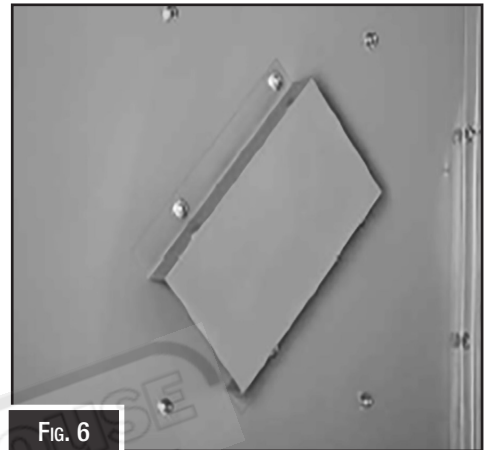


Fig. 6

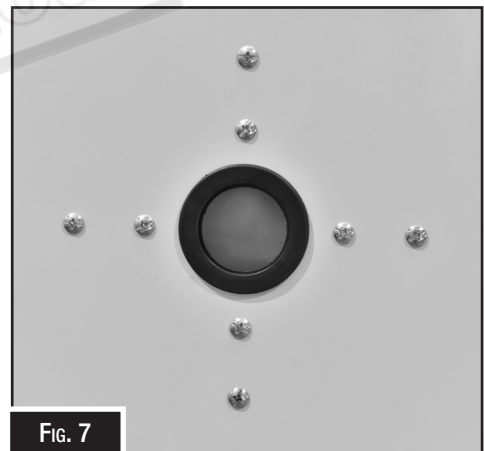


Fig. 7



WARNING

When cleaning the cabinet or the filter, wear a respirator and safety goggles. Failure to comply can cause serious personal injury.

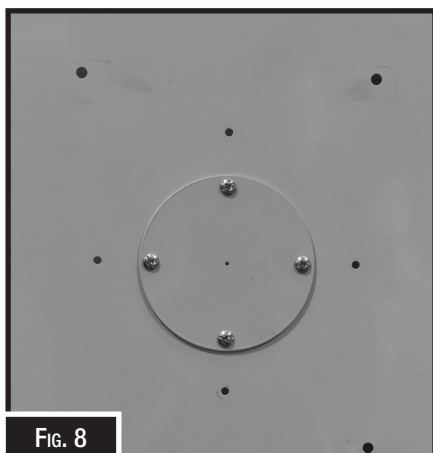


Fig. 8

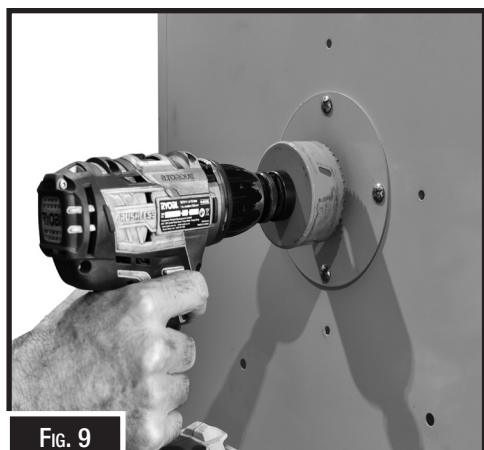
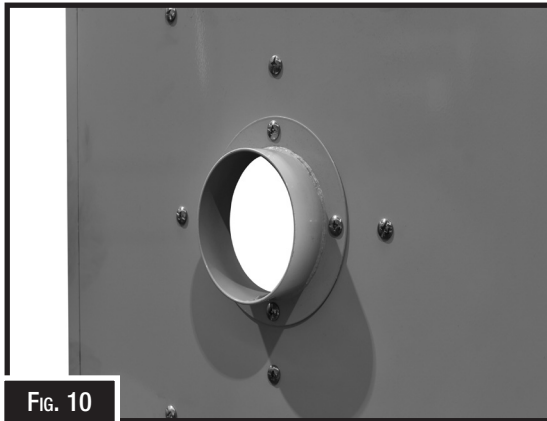


Fig. 9

3.6 BLAST CABINET DUST PORT MODIFICATION Cont.

- 5 Remove and discard the sacrificial plate and using the same holes, mount the 100mm flange with seal tape provided between the flange and the blast cabinet. (Fig. 10)



- 6 Attach the hose to the flange and secure with the metal clamp. (Fig. 11)

4. MAINTENANCE AND SERVICING

4.1 SCHEDULE

Dust Reclaimer Container

Empty after every 20 to 30 minutes of Blast Cabinet use (more often in more dusty conditions):

- a. Unplug the Power Cord from its electrical outlet.
- b. Release the Latch, and open the Dust Collector Cap at the bottom of the Dust Reclaimer. Then, allow the dust and debris to pour out into a proper waste container.
- c. Push in and out on the Pull Rod several times to help shake out any remaining dust and debris from the Dust Reclaimer.
- d. Close the Dust Collector Cap, and refasten the Latch.

Filter

Periodically, remove the Filter to keep the Dust Reclaimer working efficiently. Replace the Filter as needed:

- a. Unplug the Power Cord from its electrical outlet.
- b. Rotate the filter about 1/8th of a turn to release it from the top of the Dust Reclaimer. (Fig. 12)
- c. Remove the Filter, and clean with compressed air.
- d. Replace the Filter and Rotate 1/8th of a turn to secure it.

Replacing The Filter

- a. Unplug the Power Cord from its electrical outlet.
- b. Rotate the filter about 1/8th of a turn to release it from the top of the Dust Reclaimer.
- c. Remove the Filter, and replace with a new filter
- d. Place the new Filter and Rotate 1/8th of a turn to secure it. (Replacement Filter Order Code 9SC0024)



4. MAINTENANCE AND SERVICING

4.2 TROUBLESHOOTING

Review the troubleshooting and procedures in this section if a problem develops with your machine. If you need replacement parts then follow the procedure in beginning of the spare parts section or if additional help with a procedure is required, then contact you distributor.

Note: Make sure you have the model of the machine, serial number, and manufacture date before calling.

Symptoms	Possible Solution
Dust Reclaimer does not turn on.	<ol style="list-style-type: none"> 1. Make sure the Power Switch on is in its "ON" position. 2. Make sure the Power Cord Plug of the Dust Reclaimer is properly connected to a working, grounded, electrical outlet. 3. Have a qualified service technician check out the Dust Reclaimer and Blast Cabinet.
Poor visibility within the Blast Cabinet	<ol style="list-style-type: none"> 1. Check to make sure Dust Reclaimer is on. 2. Dust Reclaimer is full. Empty and clean out Dust Reclaimer. 3. Filter in Dust Reclaimer needs to be cleaned or replaced. 4. Check to make sure there is no clogging in the Wire Mesh Reinforced Hose. 5. Have a qualified service technician check out the Dust Reclaimer .
Machine lacks power	<ol style="list-style-type: none"> 1. Dust extractor canister filter is clogged and needs to be cleaned. 2. Motor is overheated and needs to be cooled 3. Dust extractor hole on the blast cabinet is too small. 4. Motor capacitor
Machine vibrates and is noisy	<ol style="list-style-type: none"> 1. Motor bearings are faulty and need to be replaced. 2. Fan impeller is rubbing on the housing and needs to b replaced or re-aligned. 3. Fan shaft bent and needs to checked with a dial indicator and changed if necessary. 4. Motor loose on the mounts and needs to be re-tightened.
Dust leaks from the machine.	<ol style="list-style-type: none"> 1. Hose clamp on the blast cabinet needs to be tightened. 2. Canister filter is not seating properly on the mounting



WARNING.

When cleaning the filter, wear a respirator and safety goggles. Failure to comply can cause serious personal respiratory injury.

SPARE PARTS SECTION

CYCLONE DUST COLLECTOR

Model. SB-C870

Order Code S310

Edition No : SB-C870-1

Date of Issue : 10/2022

The following section covers the spare parts diagrams and lists that were current at the time this manual was originally printed. Due to continuous improvements of the machine, changes may be made at any time without notification.

HOW TO ORDER SPARE PARTS

1. Have your machines model number, serial number & date of manufacture on hand, these can be found on the specification plate mounted on the machine
2. A scanned copy of your parts list/diagram with required spare part/s identified.

NOTE: SOME PARTS MAY ONLY BE AVAILABLE AS AN ASSEMBLY

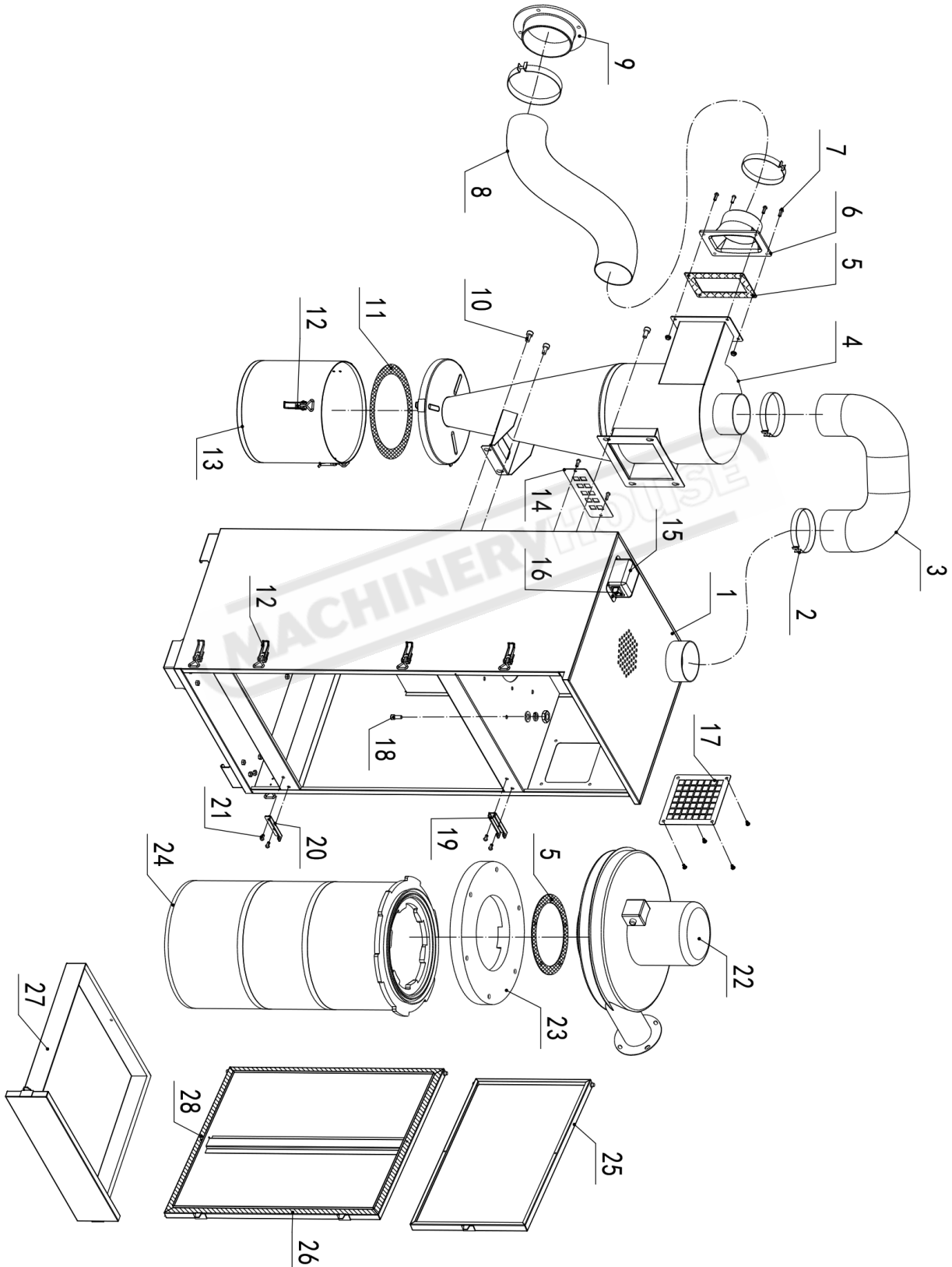
3. Go to www.machineryhouse.com.au/contactus and fill out the inquiry form attaching a copy of scanned parts list.



WARNING.

Compressed Air is Dangerous and can cause Death or Injury if misused. Always bleed off the airline before disconnecting from the compressor or machine. DO NOT use compressed air to blow dust from clothes

SPARE PARTS DIAGRAM



SPARE PARTS LIST

Item	DESCRIPTION	Qty	Item	DESCRIPTION	Qty
1	Cabinet Assembly	1	16	Switch	1
2	Clamp	4	17	Cover of the air outlet	1
3	Exhaust pipe Ø101x750mm	1	18	M8x20 hexagon socket head cap screw	11
4	Cyclone separator	1	19	Hinged support for the upper door	1
5	Sealing cotton 3MM	1	20	Hinged support for the lower door	1
6	Air vent seat	1	21	M6x12 hexagon socket head cap screw	4
7	M6X16 round head screw	4	22	Motor	1
8	Exhaust pipe Ø101x1500mm	1	23	Fixture for filter	1
9	Flange	1	24	Filter	1
10	M6x10 hexagon socket head cap screw	6	25	Upper Door	1
11	Sealing cotton 6MM	1	26	Lower Door	1
12	Latch	8	27	Drawer Assembly	1
13	Container for dust	1	28	Rubber Sealing Strip	1
14	Back Cover	1			
15	Switch Box	1			

NOTE: SOME INDIVIDUAL PARTS MAY ONLY BE AVAILABLE AS AN ASSEMBLY



WARNING

Always disconnect the power to the machine before servicing or doing maintenance to the machine.



WARNING

The machine is the sole responsibility of the owner for its safe use. This responsibility includes but is not limited to proper installation in a safe environment, personnel training, proper inspection and maintenance, manual availability and comprehension. The manufacturer will not be held liable for injury or property damage from negligence, improper training, machine modifications or misuse.

WARNING

General Machinery Safety Instructions

Machinery House
requires you to read this entire Manual before using this machine.

- 1. Read the entire Manual before starting machinery.** Machinery may cause serious injury if not correctly used.
- 2. Always use correct hearing protection when operating machinery.** Machinery noise may cause permanent hearing damage.
- 3. Machinery must never be used when tired, or under the influence of drugs or alcohol.** When running machinery you must be alert at all times.
- 4. Wear correct Clothing.** At all times remove all loose clothing, necklaces, rings, jewelry, etc. Long hair must be contained in a hair net. Non-slip protective footwear must be worn.
- 5. Always wear correct respirators around fumes or dust when operating machinery.** Machinery fumes & dust can cause serious respiratory illness. Dust extractors must be used where applicable.
- 6. Always wear correct safety glasses.** When machining you must use the correct eye protection to prevent injuring your eyes.
- 7. Keep work clean and make sure you have good lighting.** Cluttered and dark shadows may cause accidents.
- 8. Personnel must be properly trained or well supervised when operating machinery.** Make sure you have clear and safe understanding of the machine you are operating.
- 9. Keep children and visitors away.** Make sure children and visitors are at a safe distance for you work area.
- 10. Keep your workshop childproof.** Use padlocks, Turn off master power switches and remove start switch keys.
- 11. Never leave machine unattended.** Turn power off and wait till machine has come to a complete stop before leaving the machine unattended.
- 12. Make a safe working environment.** Do not use machine in a damp, wet area, or where flammable or noxious fumes may exist.
- 13. Disconnect main power before service machine.** Make sure power switch is in the off position before re-connecting.
- 14. Use correct amperage extension cords.** Undersized extension cords overheat and lose power. Replace extension cords if they become damaged.
- 15. Keep machine well maintained.** Keep blades sharp and clean for best and safest performance. Follow instructions when lubricating and changing accessories.
- 16. Keep machine well guarded.** Make sure guards on machine are in place and are all working correctly.
- 17. Do not overreach.** Keep proper footing and balance at all times.
- 18. Secure workpiece.** Use clamps or a vice to hold the workpiece where practical. Keeping the workpiece secure will free up your hand to operate the machine and will protect hand from injury.
- 19. Check machine over before operating.** Check machine for damaged parts, loose bolts, Keys and wrenches left on machine and any other conditions that may effect the machines operation. Repair and replace damaged parts.
- 20. Use recommended accessories.** Refer to instruction manual or ask correct service officer when using accessories. The use of improper accessories may cause the risk of injury.
- 21. Do not force machinery.** Work at the speed and capacity at which the machine or accessory was designed.
- 22. Use correct lifting practice.** Always use the correct lifting methods when using machinery. Incorrect lifting methods can cause serious injury.
- 23. Lock mobile bases.** Make sure any mobile bases are locked before using machine.
- 24. Allergic reactions.** Certain metal shavings and cutting fluids may cause an allergic reaction in people and animals, especially when cutting as the fumes can be inhaled. Make sure you know what type of metal and cutting fluid you will be exposed to and how to avoid contamination.
- 25. Call for help.** If at any time you experience difficulties, stop the machine and call you nearest branch service department for help.

WARNING

Cyclone Dust Collector Safety Instructions

Machinery House
requires you to read this entire Manual before using this machine.

- 1. Maintenance.** Make sure the Dust collector is turned off and disconnect from the main power supply and make sure all moving parts have come to a complete stop before any inspection, adjustment or maintenance is carried out.
- 2. Dust collector Condition.** Dust collector must be maintained for a proper working condition. Never operate a Dust collector that has damaged or worn parts. Scheduled routine maintenance should be performed on a scheduled basis.
- 3. Inlet Hazard.** Do not place hands or tools near the open inlets during operation for any reason. The impeller could cause serious damage to body parts if touched while spinning.
- 4. Avoiding Entanglement.** Guards and dust bags must be used at all times. Remove loose clothing, belts, or jewelry items. Tie up long hair and use the correct hair nets to avoid any entanglement with the Dust collector.
- 5. Understand the machines controls.** Make sure you understand the use and operation of all controls.
- 6. Power outage.** In the event of a power failure during use of the Dust collector, turn off all switches to avoid possible sudden start up once power is restored.
- 7. Work area hazards.** Keep the area around the Dust collector clean from oil, tools, chips. Pay attention to other persons in the area and know what is going on around the area to ensure unintended accidents.
- 8. Hearing protection and hazards.** Always wear hearing protection as noise generated from dust collector can cause permanent hearing loss over time.
- 9. Dust Collector use.** This Dust Collector is designed to be used with Metal only. Do not pick up material that can not safely pass through the impeller.
- 10. Fire Hazard.** Ensure machines and hoses only connect with smooth-walled, sheet-metal ducting, to minimize static electrical charge. Ensure the dust extraction hose used is heat resistant and flame retardant and a minimum length of 2 meters between machine and dust collector. DO NOT use PVC pipe. If using ducting, the system must be sealed and grounded. Fine dust particles can ignite, depending on material type and circumstances. Be educated and prepared to fight a combustible metal fire. Keep the dust collector away from pilot lights, open flames, or other ignition sources. NEVER use near chemical fumes or within an enclosed spray booth.
- 11. Bags & guards.** All safety bags and guards must be used at all times. Bags must be replaced when damaged.
- 12. Emptying bags hazard.** Always wear a respirator and safety glasses when emptying dust into approved containers and dispose of properly.
- 13. Know When to Change Filters.** A simple but important safety requirement is to change filters when airflow through the system reaches a reduced pressure. Filter changing is also necessary when the pressure drop across the collector is affecting the ability of the system to capture dust, allowing it to escape into the atmosphere. Some cartridge filters can operate longer between changes. However, for heavy dust-loading applications, filter replacement might be much more frequent.
- 14. Toxic Materials.** Care should be taken not to expose operators to certain types of dusts or fumes that can result in serious, potentially deadly health effects. To reduce this risk, investigate the toxicity of dust types you work with and always seek to minimize or eliminate exposure to the operator and other bystanders.
- 15. Call for help.** If at any time you experience difficulties, stop the machine and call your nearest branch service department for help.

PLANT SAFETY PROGRAM

NEW MACHINERY HAZARD IDENTIFICATION, ASSESSMENT & CONTROL

Cyclone Dust Collector

Developed in Co-operation Between A.W.I.S.A and Australia Chamber of Manufactures
 This program is based upon the Safe Work Australia, Code of Practice - Managing Risks of Plant in the Workplace (WHSA 2011 No10)



Item No.	Hazard Identification	Hazard Assessment	Risk Control Strategies (Recommended for Purchase / Buyer / User)
B	CRUSHING	LOW	Ensure dust collector is on level solid ground and in a safe place to avoid tipping.
C	CUTTING, STABBING, PUNCTURING	MEDIUM	Isolate power to machine prior to any checks or maintenance being carried out. Do not adjust or clean dust collector until fully stopped. Ensure hose remains fitted to prevent access to fan blade. Keep body parts away from moving parts.
H	ELECTRICAL	MEDIUM	All electrical enclosures should only be opened with a tool that is not to be kept with the machine. Only use smooth walled, sheet metal ducting to minimize electrical charge
M	HIGH TEMPERATURE or FIRE	MEDIUM	Ensure the dust extraction hose used is heat resistant and flame retardant and a minimum length of 2 meters between machine and dust collector Fine dust particles can ignite, depending on material type and circumstances. Be educated and prepared to fight a combustible fire. Keep the dust collector away from pilot lights, open flames, or other ignition sources.
O	OTHER HAZARDS, NOISE.	LOW LOW LOW	Wear hearing protection as required. Approved respirator should be worn. Close fitting protective clothing should be worn.
Plant Safety Program to be read in conjunction with manufactures instructions			



www.machineryhouse.com.au



www.machineryhouse.co.nz

Authorised and signed by: 
 Safety officer:
 Manager: 

Revised Date: 11th August 2020